



Operating manual

Portaboom trailers

December 2023

For emergency assistance call Rudi Vann - 0418 489 112

Pre-start routine

- Unplug Portaboom trailer from mains lead. Access inside the trailer via walkway and unplug all Portabooms from their charging cables. Stow charging cables out of the way.



- Check battery charge level is above 12v on the battery box. If below this, you will need to reconnect the mains lead to the trailer to continue charging the trailer battery.
- Check Portaboom units are fully charged and no circuit breakers have gone off whilst charging.
- Do an inventory count for all pieces of equipment. There should be:
 - 4 x Portaboom Units
 - 4 x Booms
 - 4 x Swing stands
 - 4 x Stop Signs
 - 4 x remotes and keys
 - 2 x wheel chocks
 - 1 x spare tyre
 - 1 x coupling lock



- Make a visual inspection of the trailer for any damage.

Hitching Trailer

- Reverse vehicle to place the tow ball directly under the coupling. Make incremental movements with vehicle until it is in the correct spot. Do not attempt to move the trailer over the tow ball as this may lead to injury.



- Retract the electric stabiliser leg using the toggle switch. Once the coupling has dropped onto the tow ball secure the coupling latch and check coupling has locked in place.



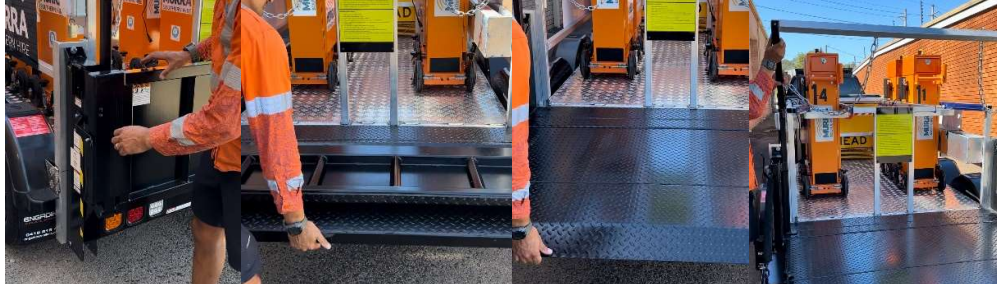
- Continue to retract the stabiliser leg all the way to the top. Once it cannot travel any further, remove the pin from the leg itself and push it up. Put the pin back into the bottom holes and secure the pin latch.



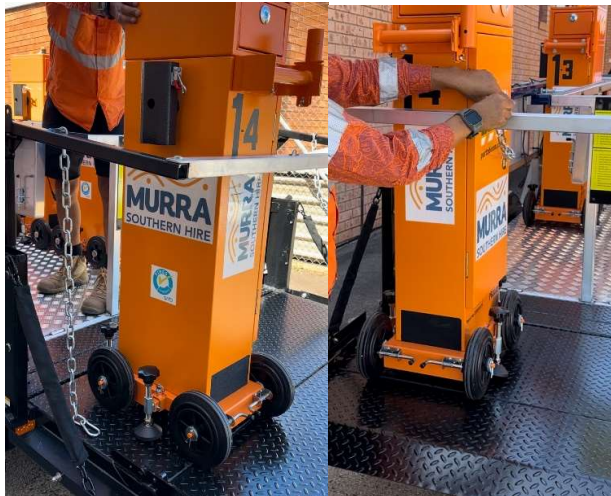
- Attach safety chains to vehicle ensuring they cross over each other. Attach light cable and release the hand brake. Check all lights on the trailer are working.

Unloading Portabooms

- **Trailer must be hitched to vehicle. Only unload 1 Portaboom at a time**
- Unlock tailgate lift and unfold tailgate platform
- Unlock tailgate cradle. Undo cradle chain and swing to the rear of the trailer.



- Enter trailer via walkway. Unlock a Portaboom from its travel cage and roll into the corresponding tailgate loading area
- Exit the trailer via walkway and attach chain around Portaboom



- Locate rear control panel. Press circular power button once. After 5 seconds press the white logo twice to activate. Both lights should turn on



- Ensure personnel and objects are clear of area and lower tailgate lift to ground
- Undo chain and remove Portaboom from the tailgate platform. Put cradle back into the rearward position and re-attach chain.



- Ensure personnel and objects are clear of area and raise tailgate lift back up to the trailer bed.
- Swing locking cradle to face the front of trailer
- Fold up the tailgate platform and lock into place



Loading Portabooms

- **Trailer must be hitched to vehicle. Only load 1 Portaboom at a time**
- Unlock tailgate platform and unfold. Ensure padlock is undone from locking cradle. Undo cradle chains



- Locate rear control panel. Press circular power button once. After 5 seconds press the white logo twice to activate. Both lights should turn on



- Ensure personnel and objects are clear of area and lower tailgate lift to ground
- While locking cradle in the forward position - roll Portaboom into the corresponding tailgate loading areas



- Swing locking cradle to the rear of trailer. Attach cradle chain securing the Portaboom
- Ensure personnel and objects are clear of area and raise tailgate lift to trailer bed. Undo cradle chain
- Enter trailer via walkway. Push Portaboom into the travel cage and secure the latch.



- Exit the trailer via walkway. Attach chains and swing locking cradle forward into the travel position. Secure padlock
- Fold up the tailgate platform and lock into place



Unhitching trailer

- When trailer is in its desired position, engage the trailer hand brake. If there is any slope, place chocks adjacent to the wheels on the downward side of the slope.
- Unclip the coupling latch
- Remove the pin from the stabiliser leg and drop it down and replace pin on the lowest setting possible.



- Using the toggle switch extend the stabiliser leg until the coupling separates from the tow ball.
- Remove safety chains and light cable.

Charging Portabooms and trailer

- Enter trailer via walkway and connect charging leads to all Portabooms. Ensure all power points and all circuit breakers are turned on.
- Connect mains lead to the rear socket of the trailer

